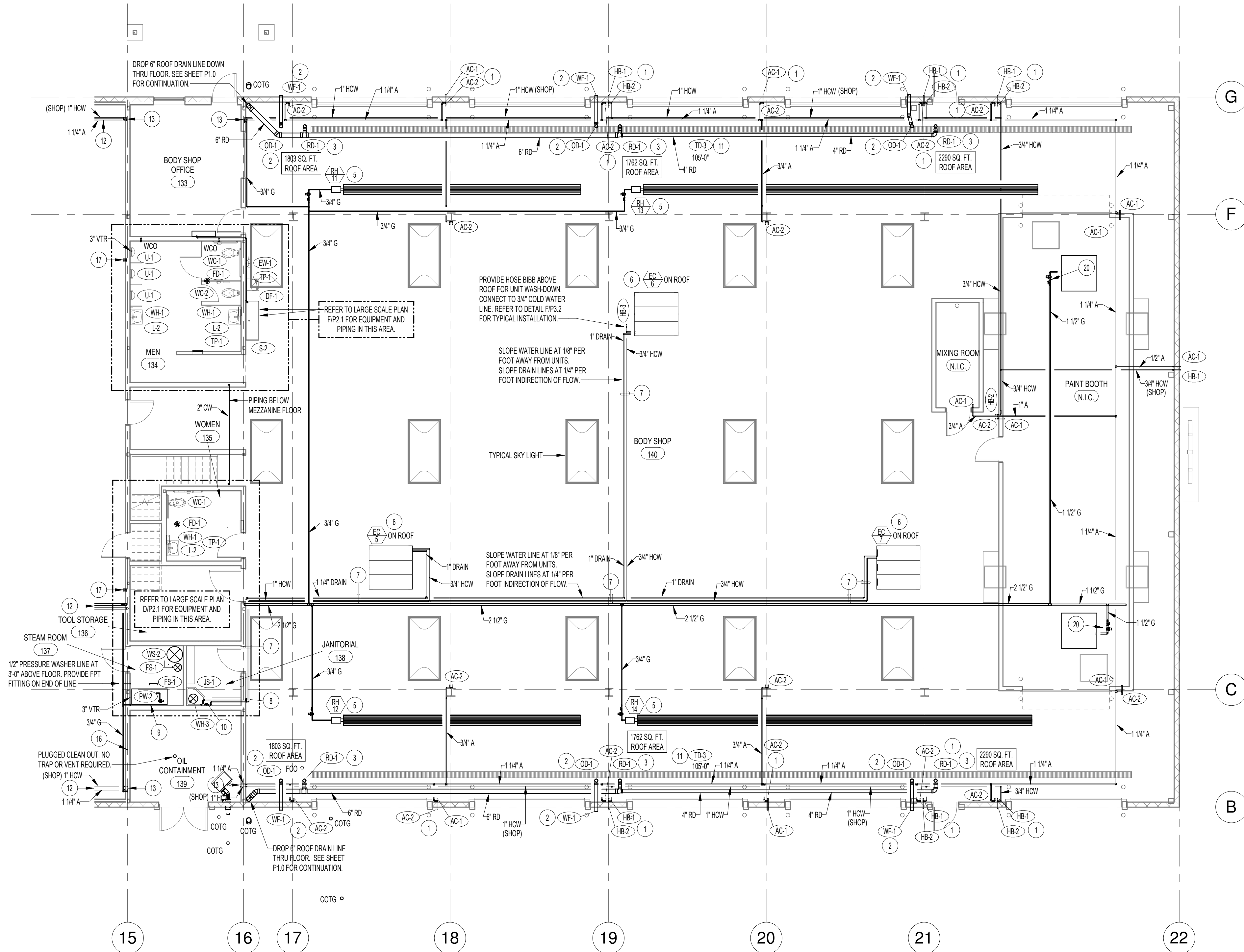


PLUMBING MEZZANINE PLAN - PART 3

SCALE: 1/8" = 1'-0"



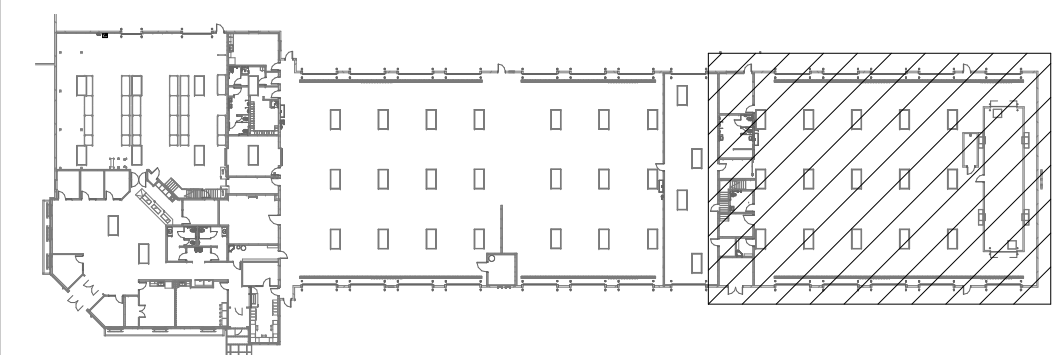
PLUMBING FLOOR PLAN - PART 3

SCALE: 1/8" = 1'-0"

PLAN NOTES:

- 1 PROVIDE AND INSTALL COMPRESSED AIR OUTLET(S) AND/OR HOSE BIBB(S) AS SPECIFIED. AIR OUTLETS TO BE MOUNTED AT 4'-0" ABOVE FLOOR ON INTERIOR OF BUILDING AND 3'-0" ABOVE GRADE ON EXTERIOR OF BUILDING. REFER TO DETAIL DP2.2 FOR TYPICAL INSTALLATION OF AIR OUTLETS. MOUNT COLD WATER HOSE BIBBS AT 2'-0" ABOVE FLOOR ON INTERIOR OF BUILDING AND 1'-6" ABOVE GRADE ON EXTERIOR OF BUILDING. REFER TO DETAIL EP3.2 FOR TYPICAL INSTALLATION OF HOSE BIBBS IN SHOP AREA. RISE 3/4" AIR AND 3/4" COLD WATER LINE UP WALL AND CONNECT TO CORRESPONDING OVERHEAD PIPING.
- 2 PROVIDE AND INSTALL OVERFLOW DRAIN AS SPECIFIED. CONNECT 4" DRAIN LINE AND RUN THRU EXTERIOR WALL TO WITH WALL FLANGE AS SPECIFIED. MOUNT WALL FLANGE AS HIGH AS POSSIBLE. COORDINATE LOCATION WITH BUILDING STRUCTURE. OTHER PIPING AND DUCTWORK. GRADE ROOF DRAIN AND OVERFLOW DRAIN LINES AT 1/8" SLOPE PER FOOT IN DIRECTION OF FLOW. KEEP PIPING AS HIGH AS POSSIBLE. SEE DETAIL AP3.2.
- 3 PROVIDE AND INSTALL ROOF DRAIN AS SPECIFIED. CONNECT 4" DRAIN LINE AND RUN THRU JOIST SPACE AS SHOWN. COORDINATE LOCATION WITH BUILDING STRUCTURE. OTHER PIPING AND DUCTWORK. GRADE ROOF DRAIN AND OVERFLOW DRAIN LINES AT 1/8" SLOPE PER FOOT IN DIRECTION OF FLOW. KEEP PIPING AS HIGH AS POSSIBLE. SEE DETAIL AP3.2.
- 4 ROOF MOUNTED FAN COIL UNIT AND REFRIGERANT PIPING PROVIDED AND INSTALLED BY MECHANICAL CONTRACTOR. REFER TO SHEET M1.3.
- 5 RADIANT TUBE HEATERS PROVIDED AND INSTALLED BY MECHANICAL CONTRACTOR. PLUMBING CONTRACTOR TO ROUGH-IN AND CONNECT 3/4" GAS LINE (2 psi) COMPLETE WITH PRESSURE REGULATOR, SHUT-OFF VALVE AND FLEXIBLE HOSE FOR CONNECTION. REFER TO DETAIL AP2.2 FOR TYPICAL GAS LINE CONNECTIONS AND TO SHEET M3.2 FOR EQUIPMENT INSTALLATION.
- 6 RISE 3/4" COLD WATER LINE UP THRU ROOF AND CONNECT TO EVAPORATIVE COOLER. GRADE WATER LINE AT 1/8" PER FOOT AWAY FROM EVAPORATIVE COOLERS. DROP 1" DRAIN LINE FROM UNIT DOWN THRU ROOF AND RUN THRU JOIST SPACE AS SHOWN. GRADE DRAIN LINE AT 1/4" SLOPE PER FOOT IN DIRECTION OF FLOW BACK TO FLOOR SINK.
- 7 RUN DRAIN LINES AND COLD WATER LINE THRU JOIST SPACE. COORDINATE ROUTING WITH BUILDING STRUCTURE. OTHER PIPING AND DUCTWORK. SLOPE DRAIN LINES AT 1/4" PER FOOT BACK TO FLOOR SINK.
- 8 DROP 1" HW AND 1-1/4" DRAIN LINE DOWN TO MAIN LEVEL CEILING SPACE. RUN DRAIN LINE TO SERVICE SINK AND 1" HW TO SHUT-OFF AND DRAIN VALVE. (SEE NOTE 10). REFER TO LARGE SCALE PLAN DP2.1 AND TO DETAIL DP3.1.
- 9 PRESSURE WASHER PROVIDED AND INSTALLED BY VENDOR. PLUMBING CONTRACTOR TO ROUGH-IN AND CONNECT 3/4" GAS LINE (2 psi) COMPLETE WITH PRESSURE REGULATOR, SHUT-OFF VALVE AND FLEXIBLE HOSE FOR CONNECTION. REFER TO DETAIL AP2.2 FOR TYPICAL GAS LINE CONNECTION. PLUMBING CONTRACTOR TO ALSO ROUGH-IN AND CONNECT 1" (SOFT) COLD WATER LINE COMPLETE WITH SHUT-OFF VALVE AND FLEXIBLE HOSE FOR CONNECTION. FIELD VERIFY EXACT LINE SIZES AND LOCATION WITH EQUIPMENT PROVIDED. REFER TO LARGE SCALE PLAN DP2.1.
- 10 DROP 1" COLD WATER LINE DOWN TO 4'-0" AND PROVIDE SHUT-OFF VALVE AND DRAIN VALVE FOR EVAPORATIVE COOLERS LOCATED ON ROOF. REFER TO DIAGRAM DP3.1 FOR PIPING CONNECTIONS. RUN 1" DRAIN LINE TO FLOOR SINK.
- 11 PROVIDE AND INSTALL PRE-FABRICATED TRENCH DRAIN AS SPECIFIED. REFER TO SHEET P1.3 FOR DRAIN CONNECTIONS AND TO DETAIL DP3.1 FOR TYPICAL INSTALLATION. REFER TO SCHEDULE FOR DRAIN LENGTHS.
- 12 REFER TO SHEET P1.2 FOR CONTINUATION OF PIPING NEAR ROOF.
- 13 REFER TO MEZZANINE PLUMBING PLAN (THIS SHEET) FOR CONTINUATION OF PIPING THRU MEZZANINE ABOVE.
- 14 REFER TO PART 3 PLUMBING PLAN (THIS SHEET) FOR CONTINUATION OF PIPING NEAR ROOF.
- 15 PIPING ON MEZZANINE LEVEL TO RAISE UP AND RUN THRU ROOF JOISTS. TYPICAL OF ALL PIPING.
- 16 MOUNT INTERNAL HOSE BIBB AT 9'-0" ABOVE FLOOR. CONNECT (THIS HOSE BIBB ONLY) TO SOFT WATER PIPING LOCATED IN STEAM ROOM. REFER TO LARGE SCALE PLAN ON SHEET P2.1.
- 17 DROP 3/4" AIR AND 3/4" HW LINES DOWN IN WALL TO OUTLETS. REFER TO SHEET P1.2 FOR INDIVIDUAL OUTLETS.
- 18 DROP 2" HW DOMESTIC, DOWN IN WALL TO CEILING SPACE OF MAIN LEVEL. REFER TO LARGE SCALE PLAN DP2.1 FOR CONTINUATION OF PIPING TO FIXTURES.
- 19 UNIT HEATER PROVIDED AND INSTALLED BY MECHANICAL CONTRACTOR. PLUMBING CONTRACTOR TO ROUGH-IN AND CONNECT 3/4" (2 psi) GAS LINE COMPLETE WITH PRESSURE REGULATOR, SHUT-OFF VALVE AND FLEXIBLE HOSE. REFER TO DETAIL AP2.2 FOR TYPICAL GAS LINE CONNECTION.
- 20 PAINT BOOTH HEATER SUPPLIED BY PAINT BOOTH SUPPLIER. PLUMBING CONTRACTOR TO ROUGH-IN AND CONNECT 1-1/2" (2 psi) GAS LINE COMPLETE WITH PRESSURE REGULATOR, SHUT-OFF VALVE AND 1-1/2" FLEXIBLE HOSE. REFER TO DETAIL AP2.2 FOR TYPICAL GAS LINE CONNECTIONS. FIELD VERIFY ACTUAL CONNECTION POINT WITH EQUIPMENT PROVIDED.

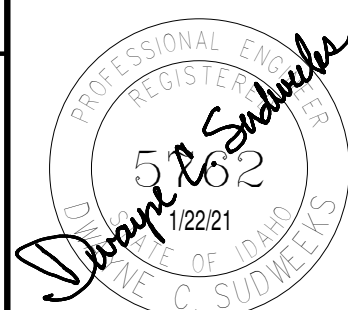
KEY PLAN



GENERAL NOTES:

- A THE CONTRACTOR SHALL CHECK AND VERIFY ALL DIMENSIONS AND CONNECTIONS ON THE JOB SITE. ALL WORK SHALL BE EXECUTED FROM MEASUREMENTS TAKEN AT THE SITE.
- B THE MECHANICAL CONTRACTOR SHALL BE RESPONSIBLE TO ENSURE PROPER CODE CLEARANCES FOR ELECTRICAL AND MECHANICAL ACCESS WHEN INSTALLING ANY EQUIPMENT SUPPLIED BY THE MECHANICAL CONTRACTOR.
- C IT IS CRITICAL THAT THIS CONTRACTOR COORDINATE EQUIPMENT LOCATIONS WITH PIPING, DUCTWORK, ELECTRICAL CONDUIT AND BUILDING STRUCTURE TO INSURE CODE COMPLIANCE.
- D CEILING DIFFUSERS ARE SHOWN IN APPROXIMATE LOCATIONS. REFER TO LIGHTING PLANS AND REFLECTED CEILING PLAN FOR EXACT LOCATIONS.
- E DUCT DIMENSIONS CALLED OUT ON DRAWINGS ARE INSIDE FREE AREA DIMENSIONS. ACOUSTICAL DUCT LINER ARE TO BE ADDED TO OVERALL MEASUREMENTS.
- F ALL DUCTWORK AND PIPING WHICH PASS THRU FIRE RATED WALLS TO BE FIRE STOPPED WITH APPROVED FOAM OR SEALANT. REFER TO SPECIFICATIONS FOR APPROVED MANUFACTURES.

ALL COMPRESSED AIR PIPING THROUGHOUT THE BUILDING TO BE BID AS ALTERNATE #1.



**Engineered Systems Associates**  
1355 EAST CENTER  
POCATELLO, IDAHO 83201  
PHONE: (208) 233-0501  
FAX: (208) 233-0529  
EMAIL: esa@engsysstemis.com  
ESA JOB NUMBER: 20032

A NEW BUILDING FOR:

**KENWORTH SALES COMPANY INC.**

4373 W. EXPO PARKWAY  
POST FALLS, IDAHO 83854

PROJECT:

REVISIONS

NO.	REVISION	DATE
1	Addendum #1	01/22/21

PROJECT NO.  
19034  
DATE:  
JAN. 2021  
DRAWN BY:  
M. Jensen  
CHECKED BY:  
D. Sudweeks

DRAWING NO.:

**P1.3**

**nbwarchitects p.a.**  
ARCHITECTURE / PLANNING / INTERIORS  
KEVIN R. BODILY, A.I.A. JAMES H. WYATT, A.I.A. GEOFF L. NIELSON, A.I.A.  
900 JOHN HODGINS PARKWAY / P.O. BOX 2212 / IDAHO FALLS, IDAHO 83403-2212  
(208) 208-522-8779 (F) 208-522-8785 (W) nbwarchitects.com

PLUMBING FLOOR PLANS - PART 3

SHEET TITLE: